

KARIBAN

REFERENCE : K520

NAME :

SIZES : 6/8_8/10_10/12_12/14

COMPOSITION :

Main fabric : Cotton poplin 120 133x72 40x40 in 57/58" with Easy care

For white color 100%cotton

Main fabric : Cotton poplin 125 133x72 40x40 in 57/58" with Easy care

For colors 100%cotton

WEIGHT :

Main fabric : 120 gsm

Main fabric : 125 gsm

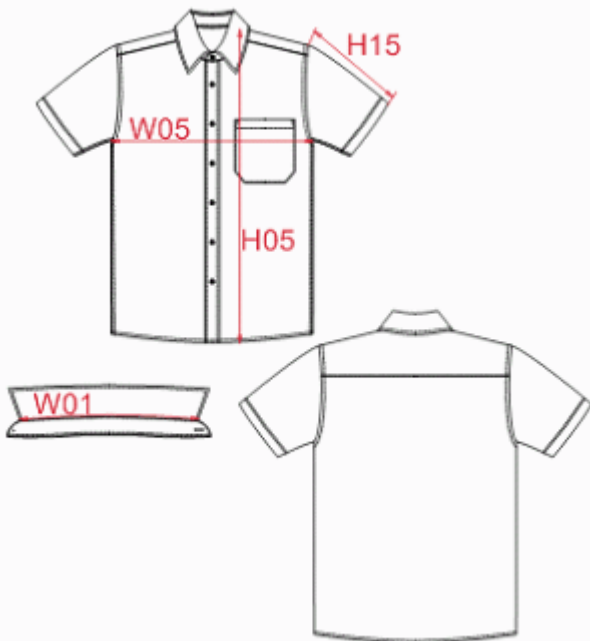
FABRIC CONSTRUCTION AND FINISHING :

Resin coating for easier ironing

COLORS	PANTONE SERIGRAPHIE
White	White
Navy	296C

DESCRIPTION

Français :	Chemise popeline manches courtes enfant
English :	Kid's short sleeve popeline shirt
Nederlands :	
Deutsch :	KURZARM POPELINEHEMD FÜR KINDER
Español :	CAMISA DE MANGA CORTA POPELINA PARA NIÑO
Italiano :	CAMICIA BAMBINO POPELINE MANICHE CORTE
Português :	Camisa de criança manga curta em popeline



MEASUREMENT

Description	6/8	8/10	10/12	12/14			
W01 Longueur encolure / Neckline length	32,40	34	35,60	37,30			
W05 1/2 largeur poitrine / 1/2 chest width	39	42	45	48			
H15 Longueur manche / Sleeve length	16,10	19,10	22,10	25,10			
H05 Hauteur totale dos / Back total height	54	59	64	69			

PACKING

Box	12 pcs / box All sizes => L:52cm W:34cm H:20cm GW:4.5kg NW:2.9kg
-----	--

CARE LABEL

